



## INTRODUCTION

### Red Funnel Ferries

The ferry crossing to the Isle of Wight has been transformed by Education Destination into a floating classroom!

The journey along Southampton Water and across the Solent starts in a city which has grown dramatically since the Industrial Revolution to become one of the UK's primary sea ports handling goods from all over the world.

### ABOUT RED FUNNEL

Formed in 1861 the company is the original Isle of Wight ferry service operator.

Now operating a round-the-clock vehicle ferry and high speed passenger service between Southampton and the Isle of Wight.

As you cruise along the ria (drowned river valley) formed during the last Ice Age, you will pass textbook examples of natural features such as mud flats, salt marshes and a spit, as well as man-made structures for industry as



well as leisure such as a large oil refinery and many marinas.

This makes the one hour journey an ideal platform for bringing human and physical geography topics to life, as well as providing stimulus for Art & Design, History, Maths, Science, P.S.H.E. and English across all key stages!



exploring the beach, sea defences and adventure playground at East Cowes, or pop into the Classic Boat Museum - all within easy walking distance of the terminal.

**"The pupils really enjoyed their crossing on the ferry. It was a great opportunity for them to look closely at their surrounding environment, rather than spending the hour doing nothing and probably looking down at their phone/iPod. The resources/ activities planned for the ferry made the best use of the time and it meant that pupil learning began before we had even reached the island."**

- David Higginbottom, KS3 Teacher

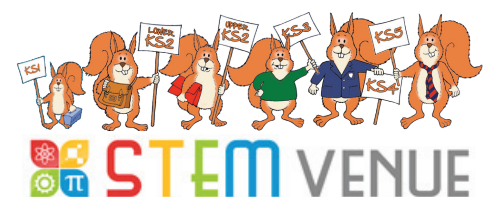
On board you will find lots of comfortable lounges with panoramic windows as well as outdoor areas for use on fair weather days.

There are several food service areas and you are welcome to eat a packed lunch aboard.

If you are travelling on a day trip purely to make use of the resources, we can arrange for your group to stay on board during crossover.

Alternatively, you could take a break and spend a couple of hours

Education Destination can also arrange coach tours of Southampton Docks.



# CURRICULUM LINKS

## Red Funnel Ferries, Southampton / Cowes



The following educational resources, prepared by qualified subject teachers, are available free of charge to schools who book their Red Funnel ferry crossing as part of their Education Destination itinerary. All are supplied with Teacher Notes, Parent Notes and where relevant, Lesson Plans.

### English

#### Spoken Language

*Spoken Announcements Study*

#### Reading

*Be Comprehensive! Discovering Red Funnel*  
*Reading heritage texts for information*

#### Writing (Composition)

*Creative Genius! Composition Challenge*

#### Grammar & Vocabulary

*Understanding maritime terminology*



### Art & Design

#### History of Art & Design

*Mondrian Magic! Art in Everyday Objects*

#### Creativity in Art & Design

*Seeing Seascapes Differently!*  
*Seascape/Choice Artists Required!*



### History

#### Chronological Understanding

*Constructing a Ferry Timeline*

#### History Study

*Match the destination to the sea vessel*  
*History of Transport: Causes and consequences in the 19th Century*

#### Ideas, Political Power, Industry and Empire: Britain 1745-1901

*History of Transport: Growth in the 19th Century*

#### Changes in the Past

*Spotting similarities and differences...*



### Geography

#### Human & Physical Geography

*Feature Finder Ferry Challenge! Geographical vocabulary*

*Ship Ahoy! Vessels and cargo on Southampton Water*

*Flood Alert! Island cut off...*

*Ice Age Britain*

*Southampton: Gateway to the world!*

*Troubled Waters: Investigating conflict on Southampton Water*

*Location! Location! Location! - Southampton Water*

*The Conservation Conundrum*

*Spit Spotter! Calshot Spit and its development*

*Containing the Containers! Role of containerisation in world trade*

*Trading Places! Southampton Port's role in global trade*

#### Locational Knowledge

*Southampton Water: Mapping land use*

#### Place Knowledge

*Discover the Difference! Comparing areas*  
*Geography Detective! Identifying features*

#### Geographical Skills and Fieldwork

*Don't Get Lost! Using simple compass directions*

*Mapping Skills Fieldwork: Shipping traffic and hazards at sea*

#### Fieldwork Investigation

*Isle of Wight Coastal Trail (12 venues)*



### P.S.H.E.

#### Working With Others

*Landmark spotting challenge!*

#### Health & Wellbeing

*Managing Risk - staying safe on board*



### Science

#### Biology

*Identifying mammals, birds and fish*  
*Spot the Species! Group, name and identify*

#### Chemistry

*Everyday materials on the ferry*

#### Physics

*Ferry Forces! Water resistance, air resistance and friction*

*Describing Ferry Motion: Speed, Distance and Time*

*Ferry Forces! Maintaining the balance*

*Exploring pressure, floating and sinking*

*Vessel Motion Investigation: stopping and turning*

*Ferry Motion! Speed (& acceleration) across the Solent*

*Ferries: Acting Forces*



### Mathematics

#### Geometry

*Ferry Shape Search!*

#### Statistics / Handling Data

*Ferry Facts & Figures*

*Triffic Travel Agency Needs You!*

*Ferry Crossing Conundrum - Functional Skills*

#### Working Mathematically

*Ferry Crossing Maths Challenge!*



For full details visit the Education Destination website

[www.edudest.uk](http://www.edudest.uk)

