



## INTRODUCTION

### GOODLEAF TREE CLIMBING, Ryde

Tree climbing is an incredibly safe activity - one your students are unlikely to have undertaken before.

Climbing uses the leg muscles predominantly, and a special technique that enables them to ascend the rope into the tree canopy at their own speed, one small group at a time.

Tree climbing is not an AALA regulated activity, making it easy to risk assess and obtain permission.

anyone booking a Goodleaf tree climbing session as part of their Education Destination itinerary.

Depending on the size of your group, the experience generally lasts between 90 minutes and two hours.



Teachers are very welcome to have a climb too!

**“A fantastic experience which I think the children (and the staff) will remember for a long time to come. Paul and his team pitched things just right for our children. It was amazing to see our most nervous pupil climbing higher than anyone!”**

- Lorraine, KS2 SEND Teacher

Nevertheless, Education Destination has arranged for a third party safety audit to be undertaken by a Chartered Safety and Health Practitioner and this audit, complete with sample risk assessment, is made available to

Students will usually climb in groups of no more than 10 or 12 depending on the level of assistance required. For those waiting their turn, a selection of fun tree-inspired educational resources are available which cover curriculum elements in Art & Design, English, P.S.H.E, Maths and Science (Biology & Physics).

Alternatively you are just a couple of minutes' walk from golden sandy beaches at Appley.

During the summer months, tree climbs can be arranged as an evening activity - the perfect way to round off a day of study or a week long tour of the Island.

## ABOUT GOODLEAF

Goodleaf are the UK's recreational tree climbing specialists.

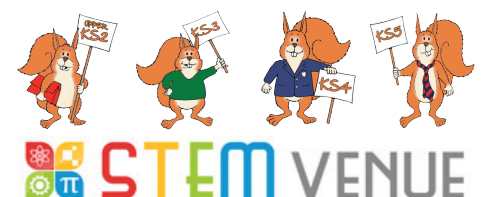
This is a unique opportunity for students aged 8 years or above to “learn the ropes” with qualified and experienced instructors, climbing as high as their confidence allows into the canopy of an impressive old oak tree to take in the beautiful views of the Solent and beyond!

## SAFETY FIRST

Climbers will need:  
Sturdy wrap-around footwear  
Long sleeved tops  
Long trousers or thick leggings  
Open-toed sandals are NOT permitted



**APPROVED**  
EDUCATION DESTINATION LTD  
SAFETY MANAGEMENT SYSTEM



# CURRICULUM LINKS

## GOODLEAF TREE CLIMBING, Ryde



The following educational resources, prepared by qualified subject teachers, are available free of charge to schools who book their Goodleaf Tree Climbing experience as part of their Education Destination itinerary. All are supplied with Teacher Notes, Parent Notes and where relevant, Lesson Plans.

### Art & Design

#### Creativity in Art & Design

*Tree Creations - Artistic response to Appley Park & Trees*



### Mathematics

#### Geometry

*TrigonomeTREE!*



### English

#### Reading

*Understanding Texts - Analysing Instructions*

#### Writing (Composition)

*Be Creative! Tree-inspired composition tasks*



### P.S.H.E.

#### Working With Others

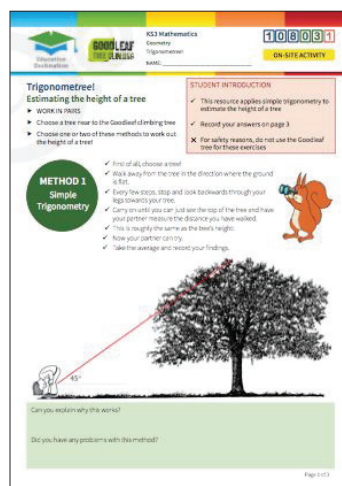
*Appley Park Orienteering Challenge!*



### Science

#### Biology

*Identifying trees at Appley Park*



For full details visit the Education Destination website

[www.edudest.uk](http://www.edudest.uk)