

## Camouflage Drawing Challenge!

Can you spot the hidden creatures and pick your favourite to sketch?

### Student Introduction

- ▶ Choose an animal which has been selected for its effective camouflage. Study its habitat - how and why is it so well camouflaged?
- ▶ Back at school you will use your drawings and develop colour and pattern to create a unique piece of artwork which demonstrates your understanding of the concept of camouflage.



- ✓ You will be using your observational skills here. Look sharp!
- ✓ Be creative in your response, and show your flair!



1

### HIDE AND SEEK!

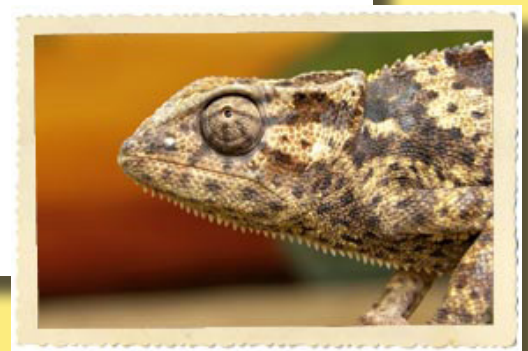
Write down the names of any animals you think blend well into their surroundings. Watch them from a distance.

Which animals blend in well?

If an animal blends into their background so that it is hard to see from a distance, we say that it is well *camouflaged*.

When you are in the reptile and amphibian room select one reptile or amphibian from your list that you would like study.

Make some notes on the next page.



2

**OBSERVE AND SKETCH!**

Select one reptile or amphibian from your list. What is it?

- Keep very still and look at it very carefully, watch it.
- Imagine you are drawing it in the air with your finger. Look at its shape.
- Look at its head. Look carefully at its shape. Is it side view or front view?
- What shape is its body? Is it long or short, fat or thin?
- Look at its legs. Are they long? How many places do they bend?
- Look at its feet. How many toes can you see? Are they long? Do they have claws?
- What else do you notice?



**Now make three sketches and draw exactly what you see.**

- ✓ *Don't worry if part of it is hiding from you. Leave it out.*
- ✓ *Don't draw it too small!*
- ✓ *If you need more paper ask your teacher.*



# My sketches

119121

3

**LET'S LOOK A BIT CLOSER...**

When you have the main body shape, look at the skin pattern and colours you can see. Is it just one colour?

How would you describe the colours?

If it is green, what sort of greens? Lime green, yellowy green, dark green, emerald green, grey/green, brownish green?

**Now look at the background that it blends with.**

**Draw some of the shapes you see.**

- Look at the colours and patterns you see around your animal.
- Which are the same as your animal? Draw them.
- Which are different?
- Where is it best camouflaged?
- Why is this?





# My sketches

119121

