

Animal Enquiry!

How much can you learn about an animal from your study of them?

Student Introduction

- ▶ Undertake a scientific enquiry into any animal
- ▶ Think about the animals you might be interested in - and then find out more!



CHOOSE AN ANIMAL FOR
YOUR SPECIAL STUDY

Look carefully at it.

Make a quick sketch of what you actually see.



Describe what it looks like, in words.



Describe what it is doing.

How does it move?

Is it alone or with others?

Write up some questions about your chosen animal using these question starters. Don't forget question marks.

1. What _____ ?

2. What _____

3. Where _____

4. Where _____

5. How _____

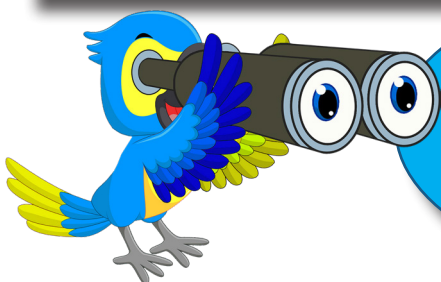
6. Why _____

Add any extra questions you might have thought of:

7. _____

8. _____

Can you think of a *when* question?



Now look
for answers using the
information boards or your
observations
Use the next sheet to write your
answers.

1. _____

2. _____

3. _____

4. _____

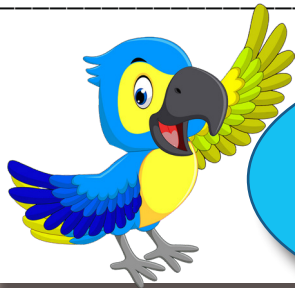
5. _____

6. _____

7. _____

8. _____

9. _____



What else could you find out about your animal back at school?

