

Animal Detectives: Change Over Time

What can you discover about Tapnell's animal occupants?

Match the animals to their place in the farm park:



Where are the
farm animals?

Teaching resources by Education Destination Ltd.

Curriculum relevant materials supporting school trips to the Isle of Wight

Book today with Education Destination and get full access to this and hundreds more quality resources

www.edudest.uk



The Barn
'Meet the Animals'

Where are the
pets?

The Wallaby Walkabout

Which is your
favourite animal?

Humans have kept animals for thousands of years.

152061

Think about the reasons these farm animals are kept.

- Write the correct words next to the animals

wool

eggs

meat

work

milk



gives us

and

Teaching resources by Education Destination Ltd.

Curriculum relevant materials supporting school trips to the Isle of Wight

Book today with Education Destination and get full access to this and hundreds more quality resources

www.edudest.uk



gives us

and



gives us



gives us help with



Although we keep guinea pigs and rabbits as pets today, many years ago they were a source of food.

Wild rabbits are still hunted for their meat.

In The Wild...

Humans only keep meerkats in parks for people to see.

They are **wild** animals and these are only **tame** because they are fed by humans.

Teaching resources by Education Destination Ltd.

Curriculum relevant materials supporting school trips to the Isle of Wight

Book today with Education Destination and get full access to this and hundreds more quality resources

www.edudest.uk



Definition

Wild

Living away from humans, in their own habitat

Tame

Learnt not to run away from humans; not afraid.

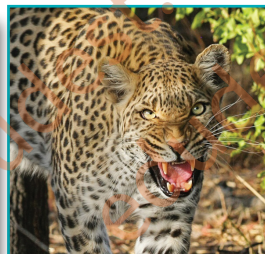


Back at school

1. Compare the wild rabbit with the different sorts of pet rabbits.
2. Compare wild pigs (wild boar) with the different sorts of farm pigs.

PRE- OR POST-VISIT ACTIVITY WORKSHEETS

These are **wild** animals found in different parts of the world:



Teaching resources by Education Destination Ltd.

Curriculum relevant materials supporting school trips to the Isle of Wight

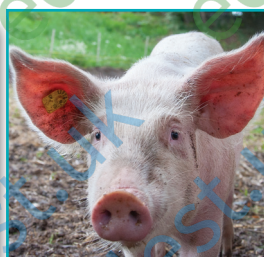
Book today with Education Destination and get full access to this and hundreds more quality resources

www.edudest.uk

Thousands of years ago, humans started keeping some types of wild animals and looked after them.

Over time, some of these animals have changed a great deal.

These are **domesticated** animals:



PRE- OR POST-VISIT ACTIVITY WORKSHEETS

1. Cut out the pictures and match up the wild animal with its domestic cousin.
2. Prepare a large sheet of paper by dividing it into 3 sections with these headings:

	Wild Animals	Domestic Animals	Reasons they've been kept by humans
Sheep			

Teaching resources by Education Destination Ltd.

Cow

Curriculum relevant materials supporting school trips to the Isle of Wight

Book today with Education Destination and get full access to this and hundreds more quality resources

www.edudest.uk

Goat			
Pig			
Dog			
Cat			
Rabbits			

Now glue the pictures in the correct places and complete the last column.

3. Which of those on your grid are farm animals and which are pets?

Farm animals

Pets

Teaching resources by Education Destination Ltd.

Curriculum relevant materials supporting school trips to the Isle of Wight

Book today with Education Destination and get full access to this and hundreds more quality resources

www.edudest.uk

Are there farm animals that can also be kept as pets?

What is the difference?

What makes an animal a pet?

Choice of extension activities

- A. Investigate other animals that have been domesticated.
E.g. Donkey, camel, guinea pig, alpaca
Why have they been domesticated?
What are their wild cousins?
- B. Investigate the variety of cats or dogs that have been bred.
Why do you think there are so many?
- C. Investigate the difference between a wild duck and a domestic duck.
- D. What domestic animals did the Egyptians, Greeks or Romans keep? For what purpose?

